

FANS FOR ROUND DUCTS

Series
VENTS BOOST 355-400
VENTS BOOST 355-400 EC



Inline fans in a polymer casing
with the air flow
of up to **5700 m³/h**

■ **Application**

Inline fans for supply and extract ventilation of various commercial and industrial premises requiring powerful air flow. The fans are compatible with Ø 355 and 400 mm air ducts.

■ **Design**

The fan casing is made of polymer and reinforced with a metal housing. Due to the conically-shaped polymer impeller with specially profiled blades the air stream circular velocity increases, which results in higher air flow and pressure as compared to characteristics of standard axial fans.

The specially designed diffuser, impeller and airflow rectifier at the fan outlet provide smooth air flow distribution and enable the best combination of high air flow, increased pressure and low noise. The fan casing is equipped with an airtight terminal box for connection to power mains.

■ **Motor**

The line features three-speed four-pole asynchronous motors and energy-efficient EC motors.

■ **Speed control**

AC fans are controlled by either a P3-5,0 three-stage or a smooth thyristor speed controllers, connected to the maximum speed terminal. EC models are regulated by a smooth 0-10V controller.

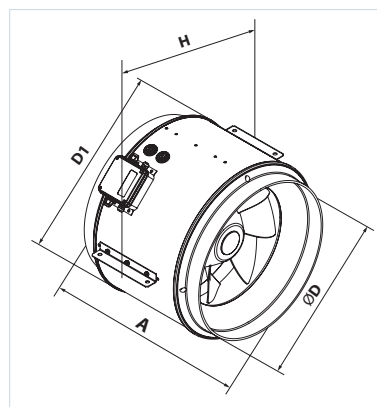
■ **Mounting**

The fans can be mounted at any place and at any angle within the ductwork system. Several fans can be installed in one system in parallel to attain higher air flow or in series to increase operating pressure in the system. The fan casing is equipped with fixing brackets for floor, wall or ceiling mounting.

The fans can be mounted using KM-BOOST brackets of the appropriate size (purchased separately).

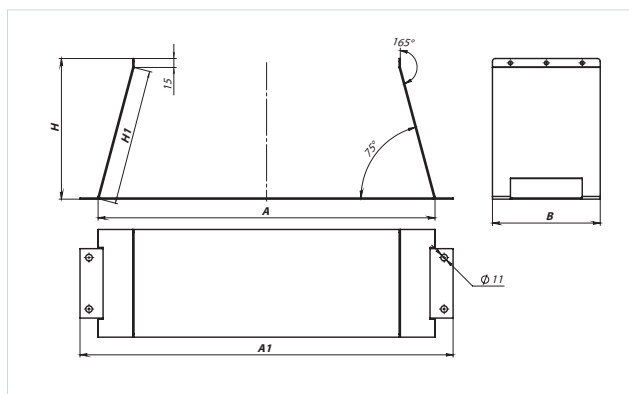
Overall dimensions

Model	Dimensions [mm]			
	A	Ø D	D1	H
BOOST 355 BOOST 355 EC BOOST 355 EC S	388	350	390	450
BOOST 400 BOOST 400 EC	388	395	441	500



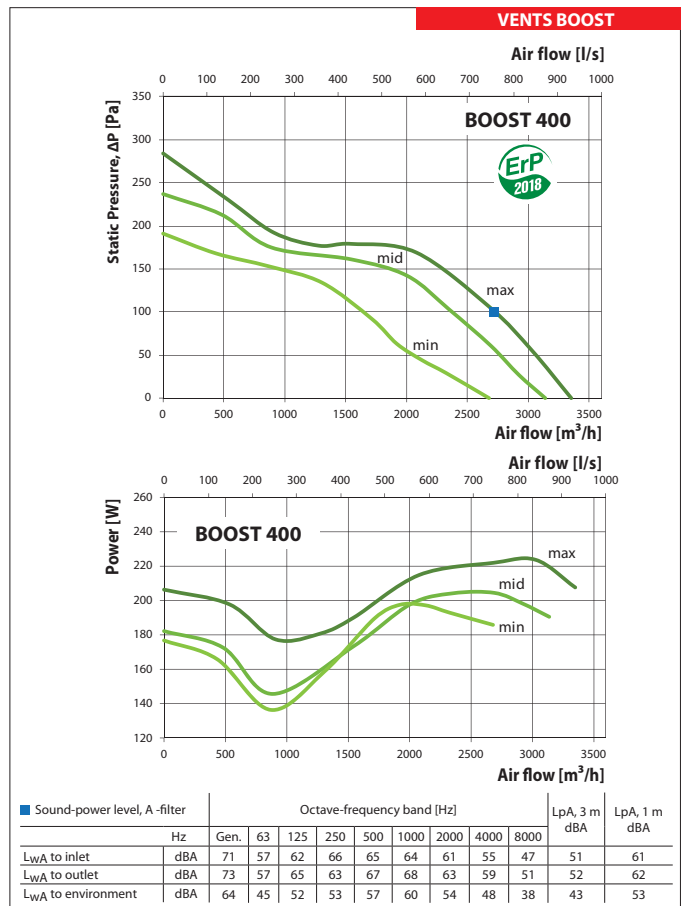
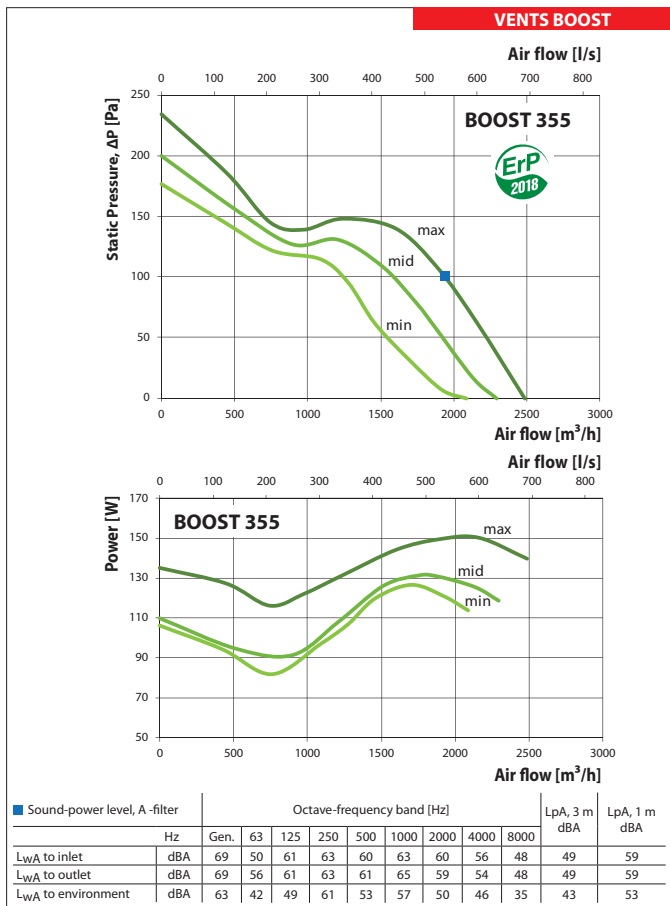
Overall dimensions of brackets

Model	Dimensions [mm]				
	A	A1	H	H1	B
KM-BOOST 355	506	567	213	204	180
KM-BOOST 400	563	624	235	228	180



Technical data

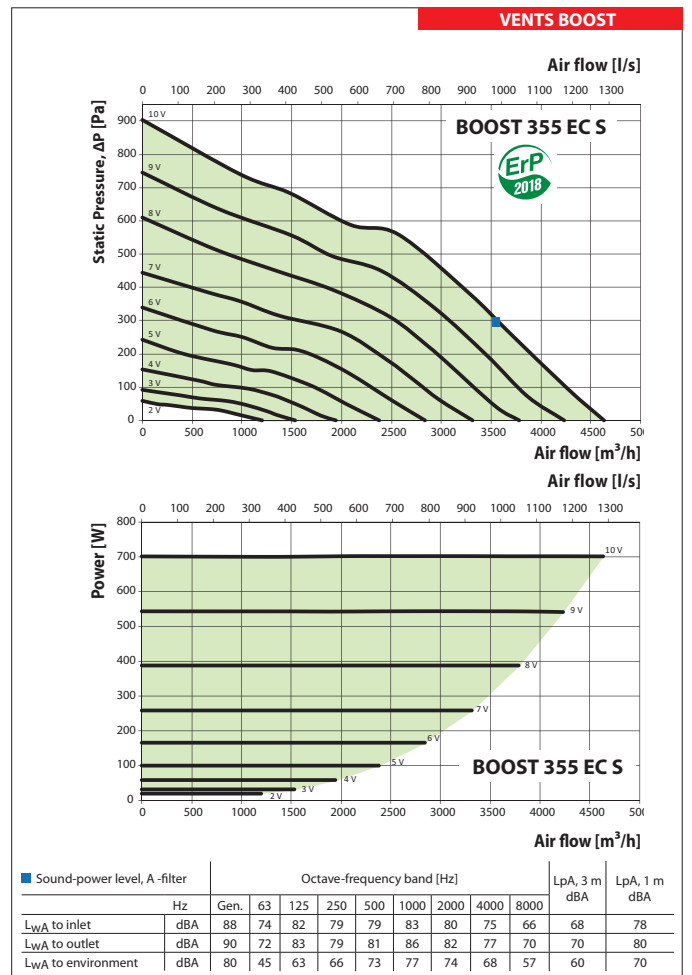
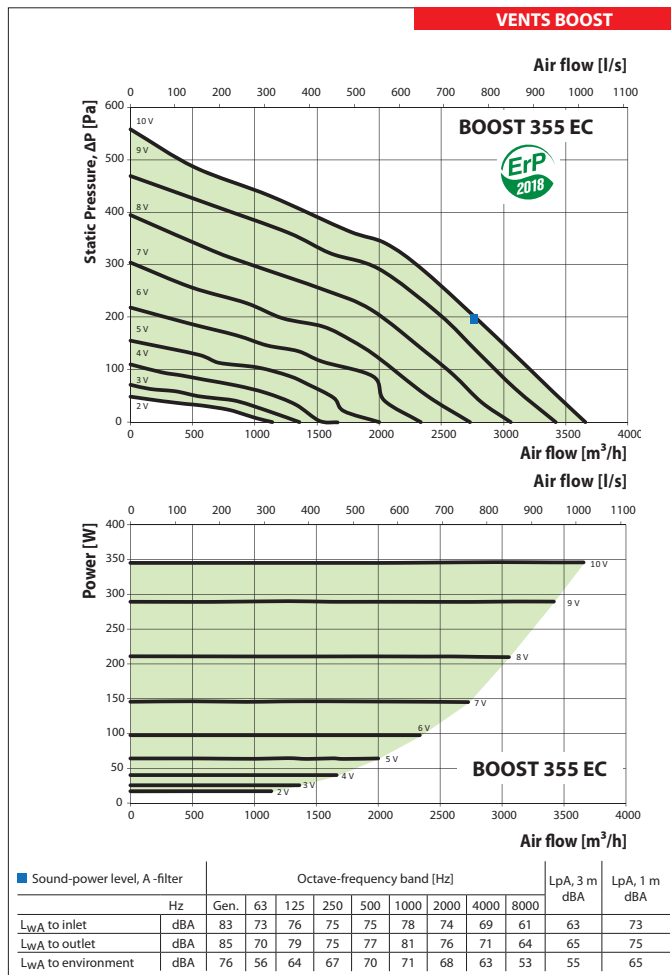
	BOOST 355			BOOST 400		
Speed	Min	Mid	Max	Min	Mid	Max
Voltage [V / 50 Hz]	1~230			1~230		
Power [W]	126	131	150	197	204	224
Current [A]	0.60	0.58	0.66	0.91	0.90	0.98
Max. airflow [m ³ /h]	2090	2296	2485	2677	3136	3350
Max. airflow [l/s]	581	638	690	744	871	931
RPM [min ⁻¹]	1350	1400	1470	1320	1390	1446
Sound pressure level at 3 m distance [dBA]	38	38	43	40	42	43
Maximum transported air temperature [°C]	-25...+55			-25...+55		
Protection rating	IPX4			IPX4		
Motor protection rating	IP44			IP44		



FANS FOR ROUND DUCTS

Technical data

	BOOST 355 EC	BOOST 355 EC S
Voltage [V/50 Hz]	1~230	1~230
Power [W]	346	701
Current [A]	1.54	3.10
Maximum air flow [m ³ /h]	3685	4630
Maximum air flow [l/s]	1024	1286
RPM [min ⁻¹]	2470	3175
Sound pressure level at 3 m distance [dBA]	55	60
Maximum transported air temperature [°C]	-25...+55	-25...+55
Protection rating	IPX4	IPX4
Motor protection rating	IP44	IP44



Technical data

	BOOST 400 EC
Voltage [V/50 Hz]	1~230
Power [W]	726
Current [A]	3.23
Maximum air flow [m ³ /h]	5700
Maximum air flow [l/s]	1583
RPM [min ⁻¹]	2580
Sound pressure level at 3 m distance [dBA]	60
Maximum transported air temperature [°C]	-25...+55
Protection rating	IPX4
Motor protection rating	IP44

