

FLY K | High Pressure Insect Control Air Curtains
For Commercial And Industrial Doors



Characteristics



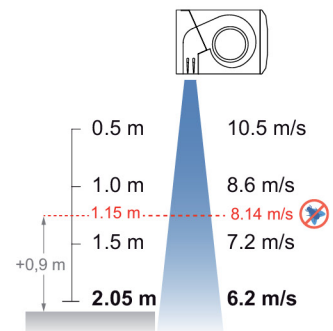
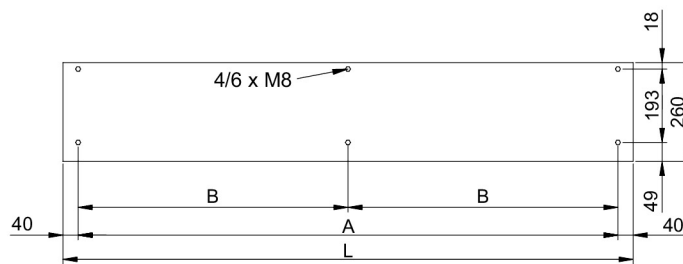
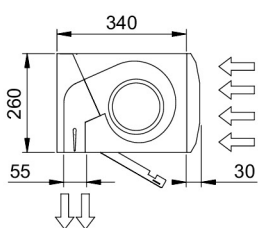
- Specially designed for insects control at entranceways such as food establishments and industry, hospitals or clean zones.
 - High velocity air barrier to prevent flying insects from entering a building. Up to 2m height doors according to NSF 37 standard
 - Self-supporting casing construction made of galvanized steel plate, finished in structural epoxy-polyester painting white colour RAL9016 as standard. Other colours or stainless steel are available on request.
 - Large perforated inlet grille avoiding intensive maintenance.
 - Anodized aluminium outlet vanes, airfoil shaped, adjustable from 0 to 15° each side.
 - EC Double-inlet centrifugal fans driven by an external rotor motor and low noise level, with very low consumption efficiency fans.
 - "A" type without heating, air only.
 - Includes Plug&Play Hand Auto control with 7m RJ45 cable and magnetical door contact.
- Optional: Clever control (programmable, automatic, intelligent, energy saving, Modbus RTU for BMS...).

Specifications

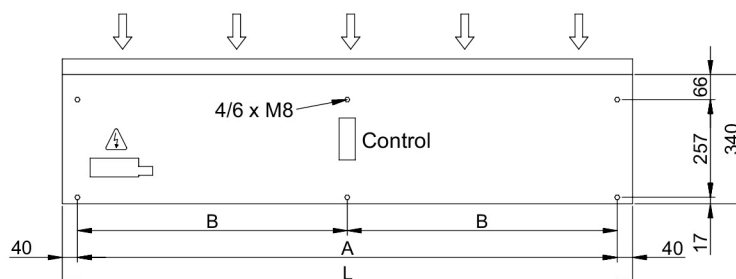
AIR ONLY

Model	Airflow m ³ /h	Power Fans 230V-50Hz kW	Current Fans 230V-50Hz A	Noise Level (5 m) dB(A)	Weight kg
FLY K 1000 A	2700	0,225	1,95	61	37
FLY K 1500 A	3600	0,300	2,60	62	56
FLY K 2000 A	5400	0,450	3,90	63	71
FLY K 2500 A	6300	0,525	4,55	64	78
FLY K 3000 A	7200	0,600	5,20	65	86

Dimensions



L	A	B
1000	920	-
1500	1420	710
2000	1920	960
2500	2420	1210
3000	2920	1460



According to standard NSF-37-2012, the maximum installation height is the speed profile point at 8,14m/s plus 0,9m. So FLY K can be used until 1,15m+0,9m=2,05m.