

CASB-X



Belt-driven, high pressure fans fitted with electric motors and a standardised set of pulleys, belts and protectors in accordance with standard ISO-13857.



Fan:

- Sheet steel casing.
- Impeller with reaction blades in extremely robust sheet steel.
- Motor assembled on the general bench.

Motor:

- IE3 efficiency motors.
- Class F motors with ball bearings and IP55 protection.
- Three-phase 230/400 V - 50 Hz (up to 4 kW) and 400/690 V - 50 Hz (powers higher than 4 kW).
- Maximum temperature of air to be carried: -25 °C +120 °C.

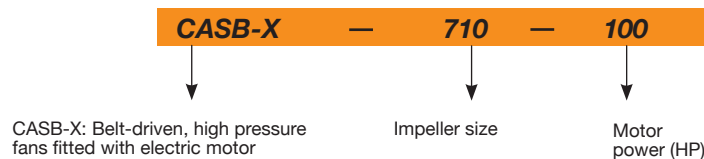
Finish:

- Anti-corrosive finish of polyester resin polymerised at 190 °C, previously degreased with phosphate-free nanotechnological treatment.

On request:

- Special windings for different voltages.
- Fan prepared for air transmission of up to 250 °C.
- Stainless steel fan.
- ATEX-certified Category 2.
- System 8 elastic coupling.

Order code



Technical characteristics

Model	Speed (r/min)	Max. admissible current (A)			Installed power (kW)	Maximum flow rate (m ³ /h)	Maximum pressure (mm H ₂ O)	Weight (kg)	According to ErP
		230 V	400 V	690 V					
CASB-X-350-1 IE3	1995	2.82	1.62		0.75	2640	100	102	2015
CASB-X-350-1.5 IE3	2270	4.07	2.34		1.10	3000	130	112	2015
CASB-X-350-2 IE3	2520	5.48	3.15		1.50	3330	160	115	2015
CASB-X-350-3 IE3	2870	7.93	4.56		2.20	3790	210	124	2015
CASB-X-350-4 IE3	3045	10.70	6.15		3.00	4020	235	130	2015
CASB-X-350-5.5 IE3	3525	13.90	8.00		4.00	4660	315	141	2015
CASB-X-350-7.5 IE3	3935		10.30	5.97	5.50	5200	390	166	2015
CASB-X-350-10 IE3	4200		13.90	8.06	7.50	5550	445	175	2015
CASB-X-400-1.5 IE3	1915	4.07	2.34		1.10	3850	110	131	2015
CASB-X-400-2 IE3	2125	5.48	3.15		1.50	4280	135	134	2015
CASB-X-400-3 IE3	2420	7.93	4.56		2.20	4870	175	143	2015
CASB-X-400-4 IE3	2695	10.70	6.15		3.00	5420	220	149	2015
CASB-X-400-5.5 IE3	2970	13.90	8.00		4.00	5980	265	160	2015
CASB-X-400-7.5 IE3	3315		10.30	5.97	5.50	6670	330	185	2015
CASB-X-400-10 IE3	3675		13.90	8.06	7.50	7390	405	194	2015
CASB-X-400-15 IE3	3900		20.90	12.10	11.00	7840	460	234	2015
CASB-X-450-2 IE3	1720	5.48	3.15		1.50	5090	120	148	2015
CASB-X-450-3 IE3	1960	7.93	4.56		2.20	5800	155	157	2015
CASB-X-450-4 IE3	2180	10.70	6.15		3.00	6440	190	163	2015
CASB-X-450-5.5 IE3	2405	13.90	8.00		4.00	7110	230	174	2015
CASB-X-450-7.5 IE3	2685		10.30	5.97	5.50	7940	290	199	2015
CASB-X-450-10 IE3	2980		13.90	8.06	7.50	8800	355	208	2015

Technical characteristics

Model	Speed (r/min)	Max. admissible current (A)			Installed power (kW)	Maximum flow rate (m ³ /h)	Maximum pressure (mm H ₂ O)	Weight (kg)	According to ErP
		230 V	400 V	690 V					
CASB-X-450-15 IE3	3385		20.90	12.10	11.00	10000	460	248	2015
CASB-X-450-20 IE3	3650		27.90	16.20	15.00	10790	535	270	2015
CASB-X-500-3 IE3	1640	7.93	4.56		2.20	6710	135	196	2015
CASB-X-500-4 IE3	1820	10.70	6.15		3.00	7460	165	202	2015
CASB-X-500-5.5 IE3	2010	13.90	8.00		4.00	8230	205	213	2015
CASB-X-500-7.5 IE3	2245		10.30	5.97	5.50	9190	255	238	2015
CASB-X-500-10 IE3	2325		13.90	8.06	7.50	9520	270	247	2015
CASB-X-500-15 IE3	2830		20.90	12.10	11.00	11580	400	287	2015
CASB-X-500-20 IE3	3135		27.90	16.20	15.00	12840	495	309	2015
CASB-X-500-25 IE3	3365		35.10	20.30	18.50	13770	570	347	2015
CASB-X-560-5.5 IE3	1675	13.90	8.00		4.00	9590	175	238	2015
CASB-X-560-7.5 IE3	1870		10.30	5.97	5.50	10700	220	263	2015
CASB-X-560-10 IE3	2075		13.90	8.06	7.50	11870	270	272	2015
CASB-X-560-15 IE3	2135		20.90	12.10	11.00	12210	285	312	2015
CASB-X-560-20 IE3	2610		27.90	16.20	15.00	14940	430	334	2015
CASB-X-560-25 IE3	2800		35.10	20.30	18.50	16040	495	372	2015
CASB-X-560-30 IE3	2970		41.00	23.80	22.00	16990	555	389	2015
CASB-X-560-40 IE3	3150		57.10	33.10	30.00	18040	625	432	2015
CASB-X-630-10 IE3	1685		13.90	8.06	7.50	13530	215	353	2015
CASB-X-630-15 IE3	1735		20.90	12.10	11.00	13920	230	393	2015
CASB-X-630-20 IE3	2125		27.90	16.20	15.00	17040	340	415	2015
CASB-X-630-25 IE3	2280		35.10	20.30	18.50	18290	395	453	2015
CASB-X-630-30 IE3	2415		41.00	23.80	22.00	19380	440	470	2015
CASB-X-630-40 IE3	2675		57.10	33.10	30.00	21480	540	513	2015
CASB-X-630-50 IE3	2870		66.80	38.70	37.00	23040	625	660	2015
CASB-X-630-60 IE3	2950		80.90	46.90	45.00	23680	660	695	2015
CASB-X-710-20 IE3	1690		27.90	16.20	15.00	19650	290	475	2015
CASB-X-710-25 IE3	1810		35.10	20.30	18.50	21050	335	513	2015
CASB-X-710-30 IE3	1910		41.00	23.80	22.00	22200	370	530	2015
CASB-X-710-40 IE3	2120		57.10	33.10	30.00	24650	460	573	2015
CASB-X-710-50 IE3	2280		66.80	38.70	37.00	26500	530	720	2015
CASB-X-710-60 IE3	2430		80.90	46.90	45.00	28250	605	755	2015
CASB-X-710-75 IE3	2600		98.60	57.20	55.00	30200	690	800	2015
CASB-X-710-100 IE3	2890		134.00	77.70	75.00	33600	850	995	2015
CASB-X-800-20 IE3	1380		27.90	16.20	15.00	23750	245	600	2015
CASB-X-800-25 IE3	1480		35.10	20.30	18.50	25450	280	638	2015
CASB-X-800-30 IE3	1570		41.00	23.80	22.00	27000	315	655	2015
CASB-X-800-40 IE3	1740		57.10	33.10	30.00	29900	390	698	2015
CASB-X-800-50 IE3	1850		66.80	38.70	37.00	31800	440	845	2015
CASB-X-800-60 IE3	1980		80.90	46.90	45.00	34050	505	880	2015
CASB-X-800-75 IE3	2120		98.60	57.20	55.00	36450	580	925	2015
CASB-X-800-100 IE3	2350		134.00	77.70	75.00	40400	710	1120	2015
CASB-X-900-30 IE3	1310		41.00	23.80	22.00	31450	275	770	2015
CASB-X-900-40 IE3	1460		57.10	33.10	30.00	35050	340	813	2015
CASB-X-900-50 IE3	1570		66.80	38.70	37.00	37700	395	960	2015
CASB-X-900-60 IE3	1670		80.90	46.90	45.00	40100	445	995	2015
CASB-X-900-75 IE3	1780		98.60	57.20	55.00	42750	510	1040	2015
CASB-X-900-100 IE3	1970		134.00	77.70	75.00	47300	620	1235	2015
CASB-X-900-125 IE3	2100		158.00	91.60	90.00	50400	705	1305	2015
CASB-X-900-150 IE3	2240		193.00	112.00	110.00	53750	805	1580	2015
CASB-X-1000-40 IE3	1210		57.10	33.10	30.00	39750	295	968	2015
CASB-X-1000-50 IE3	1300		66.80	38.70	37.00	42700	340	1115	2015
CASB-X-1000-60 IE3	1390		80.90	46.90	45.00	45650	390	1150	2015
CASB-X-1000-75 IE3	1480		98.60	57.20	55.00	48600	440	1195	2015
CASB-X-1000-100 IE3	1650		134.00	77.70	75.00	54200	550	1390	2015
CASB-X-1000-125 IE3	1750		158.00	91.60	90.00	57500	620	1460	2015
CASB-X-1000-150 IE3	1870		193.00	112.00	110.00	61450	705	1735	2015
CASB-X-1000-175 IE3	1980		231.00	134.00	132.00	65050	790	1795	2015
CASB-X-1120-50 IE3	1100		66.80	38.70	37.00	48050	305	1307	2015
CASB-X-1120-60 IE3	1190		80.90	46.90	45.00	52000	360	1342	2015

Technical characteristics

Model	Speed (r/min)	Max. admissible current (A)			Installed power (kW)	Maximum flow rate (m3/h)	Maximum pressure (mm H ₂ O)	Weight (kg)	According to ErP
		230 V	400 V	690 V					
CASB-X-1120-75 IE3	1270	98.60	57.20	55.00	55500	410	1387	2015	
CASB-X-1120-100 IE3	1400	134.00	77.70	75.00	61150	495	1582	2015	
CASB-X-1120-125 IE3	1500	158.00	91.60	90.00	65500	570	1652	2015	
CASB-X-1120-150 IE3	1600	193.00	112.00	110.00	69900	645	1927	2015	
CASB-X-1120-175 IE3	1700	231.00	134.00	132.00	74250	730	1987	2015	
CASB-X-1120-220 IE3	1800	280.00	162.00	160.00	78650	820	2057	2015	
CASB-X-1250-60 IE3	980	80.90	46.90	45.00	63350	310	1625	2015	
CASB-X-1250-75 IE3	1050	98.60	57.20	55.00	67900	355	1670	2015	
CASB-X-1250-100 IE3	1160	134.00	77.70	75.00	75000	435	1865	2015	
CASB-X-1250-125 IE3	1230	158.00	91.60	90.00	79550	485	1935	2015	
CASB-X-1250-150 IE3	1320	193.00	112.00	110.00	85350	560	2210	2015	
CASB-X-1250-175 IE3	1400	231.00	134.00	132.00	90550	630	2270	2015	
CASB-X-1250-220 IE3	1500	280.00	162.00	160.00	97000	725	2340	2015	
CASB-X-1250-270 IE3	1600	346.00	201.00	200.00	103450	825	2592	2015	
CASB-X-1400-75 IE3	870	98.60	57.20	55.00	77450	300	2035	2015	
CASB-X-1400-100 IE3	970	134.00	77.70	75.00	86350	370	2230	2015	
CASB-X-1400-125 IE3	1030	158.00	91.60	90.00	91700	420	2300	2015	
CASB-X-1400-150 IE3	1100	193.00	112.00	110.00	97900	480	2575	2015	
CASB-X-1400-175 IE3	1170	231.00	134.00	132.00	104150	540	2635	2015	
CASB-X-1400-220 IE3	1240	280.00	162.00	160.00	110350	610	2705	2015	
CASB-X-1400-270 IE3	1340	346.00	201.00	200.00	119250	710	2957	2015	
CASB-X-1600-100 IE3	760	134.00	77.70	75.00	100100	290	2625	2015	
CASB-X-1600-125 IE3	810	158.00	91.60	90.00	106700	330	2695	2015	
CASB-X-1600-150 IE3	870	193.00	112.00	110.00	114600	385	2970	2015	
CASB-X-1600-175 IE3	920	231.00	134.00	132.00	121200	430	3030	2015	
CASB-X-1600-220 IE3	980	280.00	162.00	160.00	129100	485	3100	2015	
CASB-X-1600-270 IE3	1060	346.00	201.00	200.00	139650	570	3352	2015	

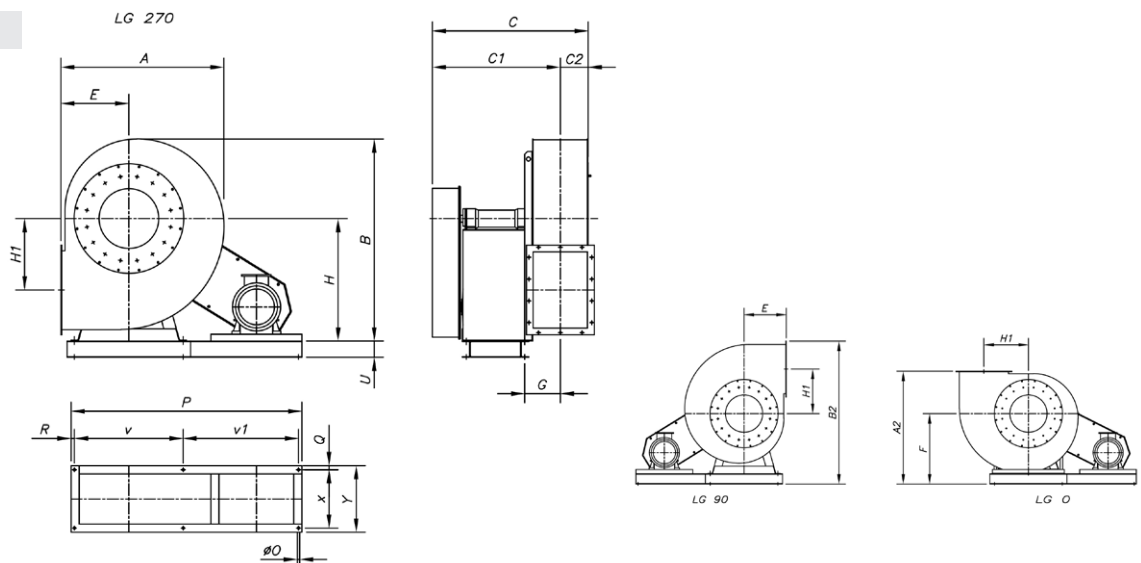


Erp. (Energy Related Products)

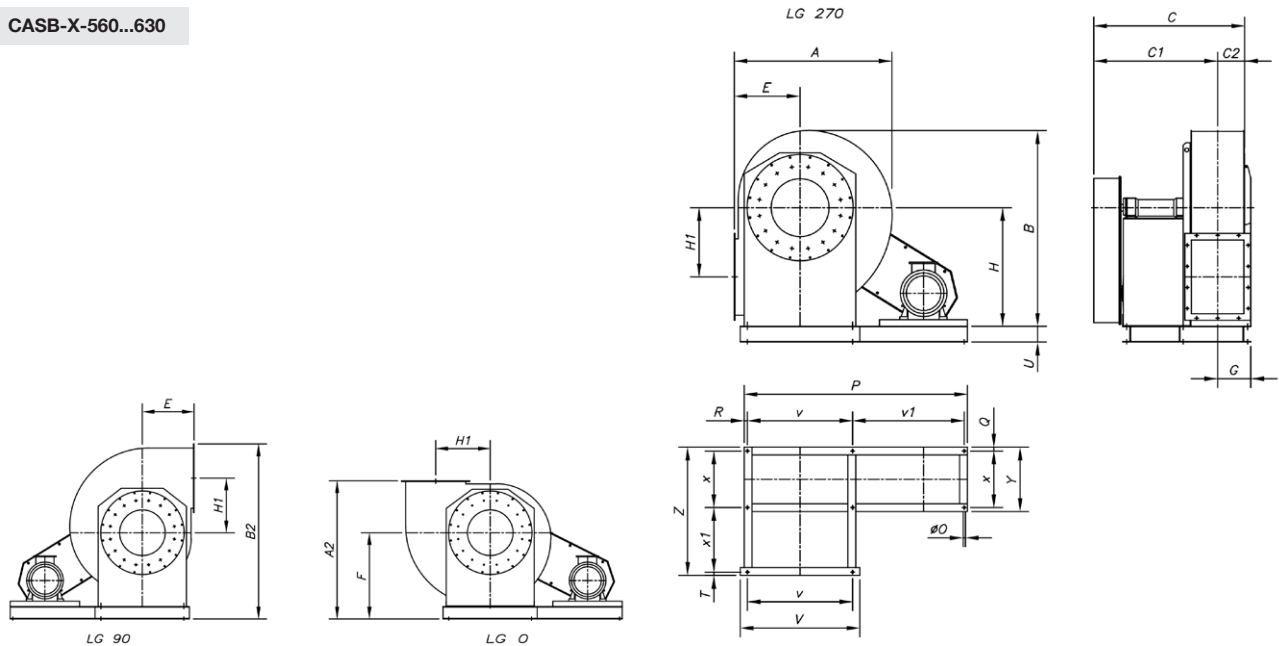
Information on Directive 2009/125/EC can be downloaded from the SODECA website or the QuickFan selector programme.

Dimensions mm

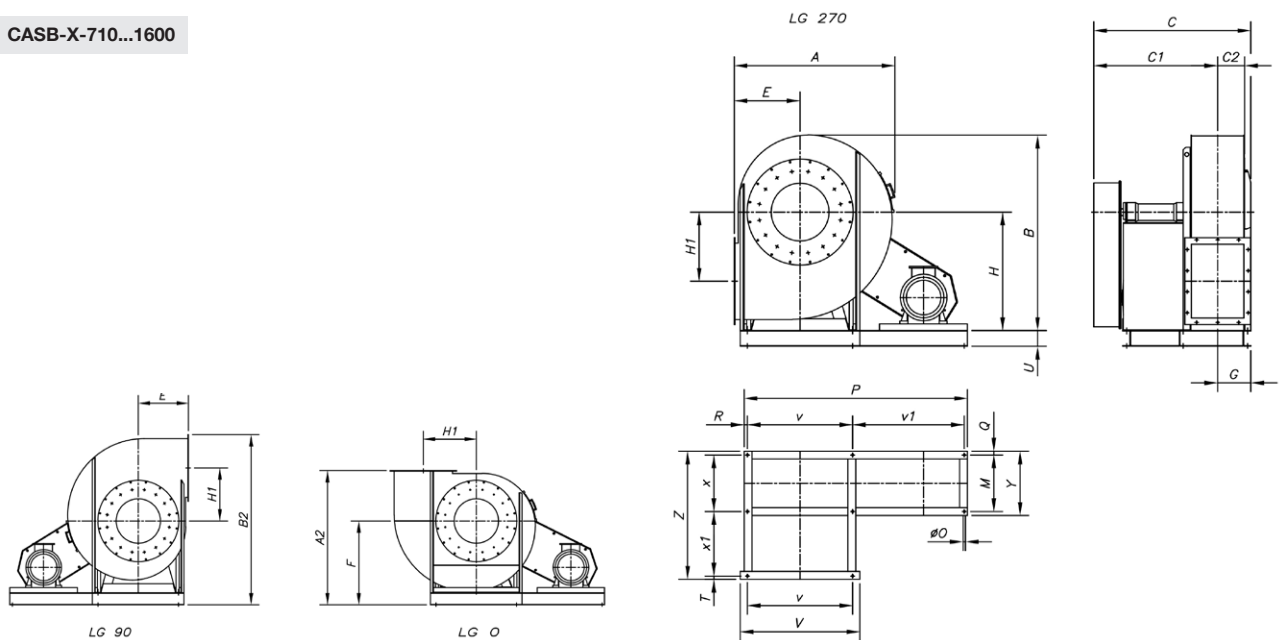
CASB-X-350...500



	A	A2	B	B2	C	C1	C2	E	F	G	H	H1	P	øO	U	v	v1	x	R	Q	Y
CASB-X-350	600	885	740	1067	783	668	115	255	630	157	450	253	810	14	180	355	410	407	22.5	28	463
CASB-X-400	655	965	815	1167	820	693	127	285	680	168	500	286	810	15	180	355	410	407	22.5	28	463
CASB-X-450	735	1060	915	1281.5	847	706	141	320	740	181	560	321	810	15	180	355	410	407	22.5	28	463
CASB-X-500	832	1140	1000	1377	985	828	157	360	780	198	600	355	850	18	180	364	432	477	27	33	543

Dimensions mm
CASB-X-560...630


	A	A2	B	B2	C	C1	C2	E	F	G	H	H1	P	øO	U	V	v	v1	x	x1	R	Q	Y	T	Z
CASB-X-560	940	1250	1126	1506.5	1058	881	177	400	850	214	670	390	1170	18	180	692	632	478	477	410	30	33	543	23	943
CASB-X-630	1052	1380	1260	1662.5	1102	907	195	450	930	234	750	439	1270	18	180	762	702	508	477	450	30	33	543	23	983

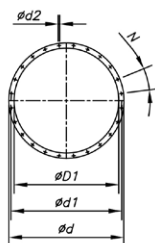
CASB-X-710...1600


	A	A2	B	B2	C	C1	C2	E	F	G	H	H1	P	øO	U	V	v	v1	x	x1	R	Q	Y	M	T	Z
CASB-X-710	1189	1350	1416	1684.5	1241	979	216	500	850	262	850	500	1433	20	180	914	772	607	551	497	27	39	629	551	27	1114
CASB-X-800	1340	1515	1591	1884	1306	1000	241	560	955	306	950	560	1568	20	180	1044	862	642	551	546	32	39	629	551	47	1183
CASB-X-900	1500	1660	1780	2067.5	1360	1026	275	630	1030	334	1060	630	1813	20	180	1144	962	787	551	600	32	39	629	551	47	1237
CASB-X-1000	1685	1840	1993	2300.5	1565	1180	308	710	1130	385	1180	710	1964	20	180	1254	1056	836	607	657	36	45	697	607	67	1376
CASB-X-1120	1884	2100	2222	2609	1780	1361	350	800	1300	419	1320	800	2134	25	220	1400	1178	866	760	763	45	45	850	760	55	1623
CASB-X-1250	2075	2260	2505	2823.5	1895	1438	385	900	1360	457	1500	900	2600	24	180	1540	1310	1220	760	840	35	35	830	760	32	1667
CASB-X-1400	2305	2500	2815	2935	2060	1560	430	1000	1500	500	1700	1000	3150	24	180	1690	1450	1630	780	946	35	35	990	920	33	1794
CASB-X-1600	2655	2800	3145	3253.5	2350	1781	480	1120	1680	569	1900	1120	3340	28	180	1950	1640	1630	920	1073	35	35	990	920	35	2063

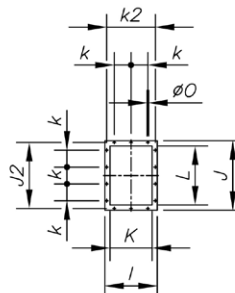
Dimensions mm

Outlet and inlet nozzle

Inlet nozzle

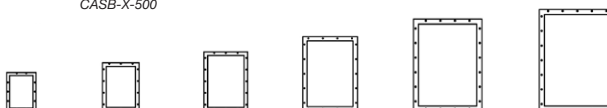


Outlet nozzle



Outlet nozzle

- | | | | | | |
|------------|-------------|------------|-------------|-------------|-------------|
| CASB-X-450 | CASB-X-1000 | CASB-X-900 | CASB-X-1250 | CASB-X-1400 | CASB-X-1600 |
| CASB-X-400 | CASB-X-800 | | CASB-X-1120 | | |
| CASB-X-350 | CASB-X-710 | | | | |
| | CASB-X-630 | | | | |
| | CASB-X-560 | | | | |
| | CASB-X-500 | | | | |

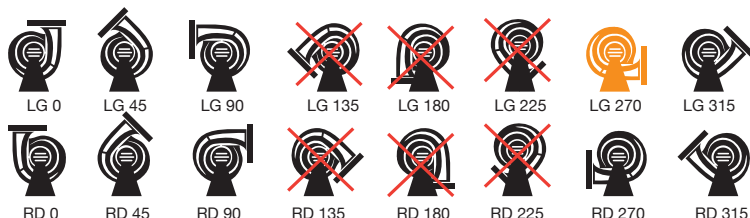


	øD1*	ød	ød1	ød2	N	I	J	J2	K	k	k2	L	øO
CASB-X-350	285	365	332	12	8x45°	285	368	332	205	125	249	288	12
CASB-X-400	320	400	366	12	8x45°	309	402	366	229	125	273	322	12
CASB-X-450	360	440	405	12	8x45°	336	441	405	256	125	300	361	12
CASB-X-500	405	485	448	12	12x30°	368	484	448	288	125	332	404	12
CASB-X-560	455	535	497	12	12x30°	402	533	497	322	125	366	453	12
CASB-X-630	505	585	551	13	12x30°	441	587	551	361	125	405	507	12
CASB-X-710	565	665	629	13	12x30°	504	669	629	404	160	464	569	14
CASB-X-800	635	735	698	13	12x30°	553	738	698	453	160	513	638	14
CASB-X-900	715	815	775	15	16x22°30'	607	815	775	507	160	567	715	14
CASB-X-1000	805	905	861	15	16x22°30'	689	921	871	569	200	639	801	14
CASB-X-1120	905	1005	958	15	16x22°30'	758	1018	968	638	200	708	898	14
CASB-X-1250	1008	1108	1067	10	24x15°	835	1127	1077	715	200	785	1007	14
CASB-X-1400	1130	1250	1200	10	24x15°	941	1270	1210	801	200	881	1130	18
CASB-X-1600	1260	1380	1337	10	24x15°	1038	1407	1347	898	200	978	1267	18

* Recommended nominal tube diameter

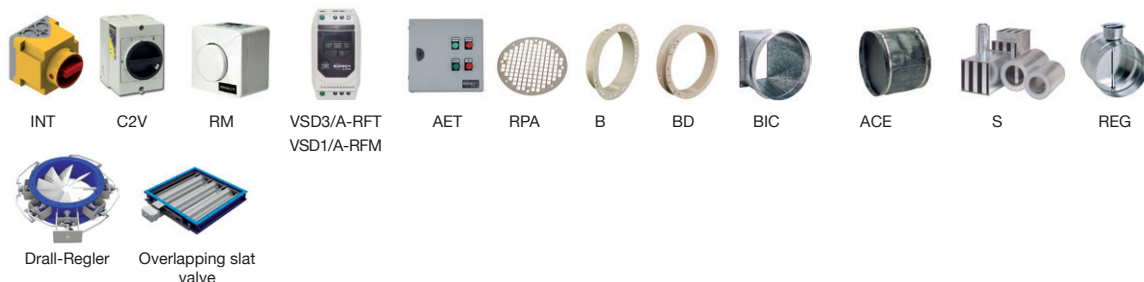
Orientation

Standard supply LG 270



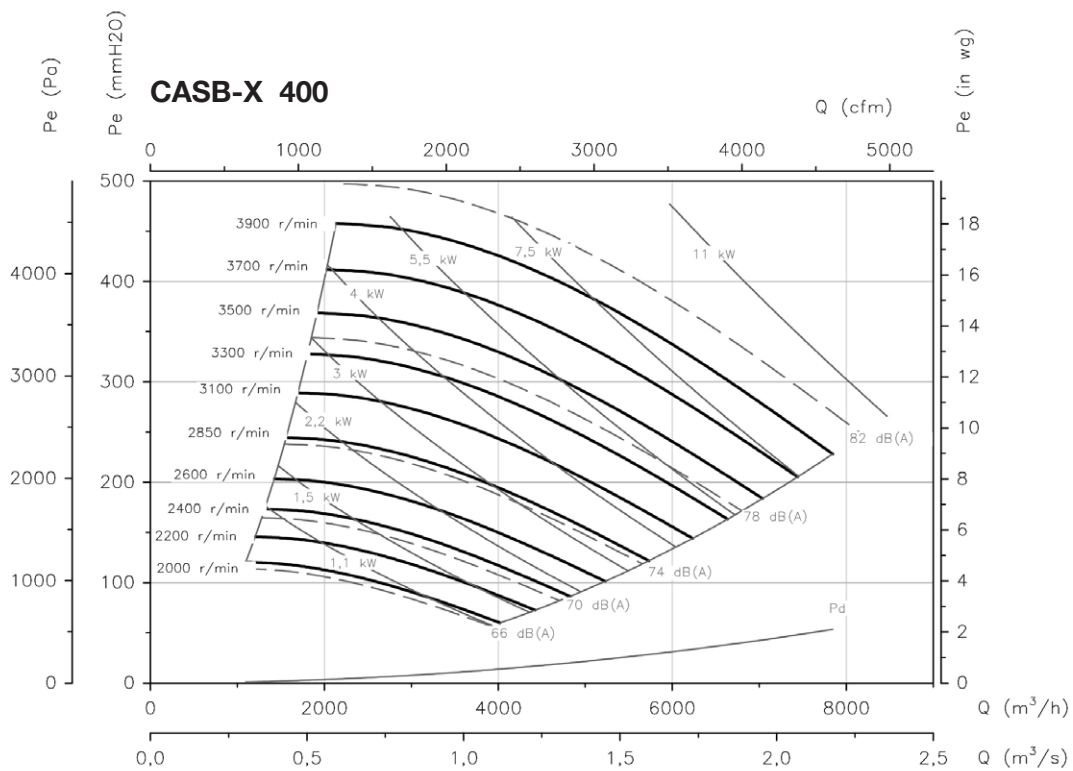
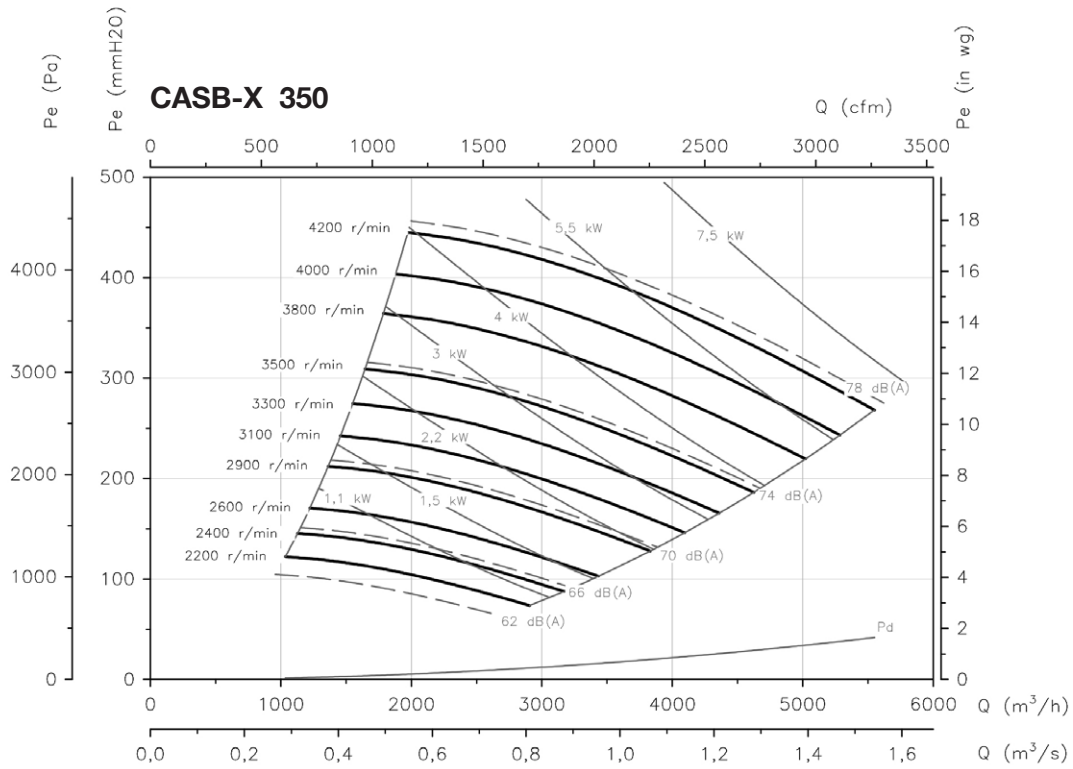
Accessories

See accessories section.



Characteristic curves

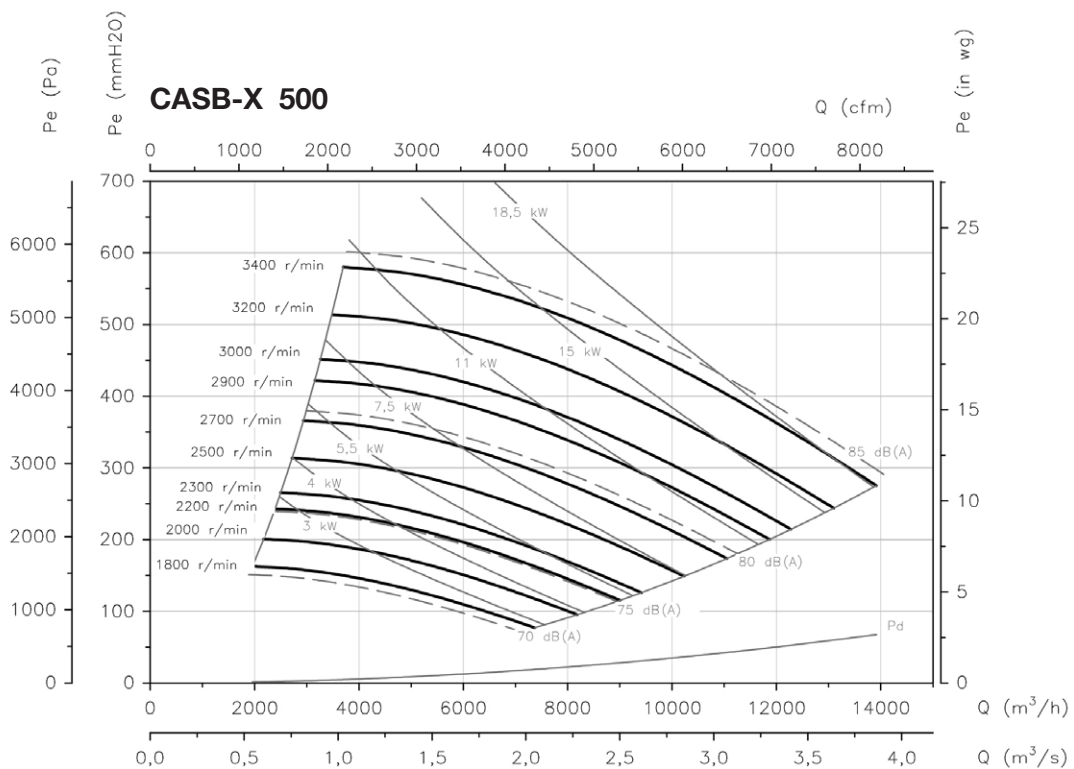
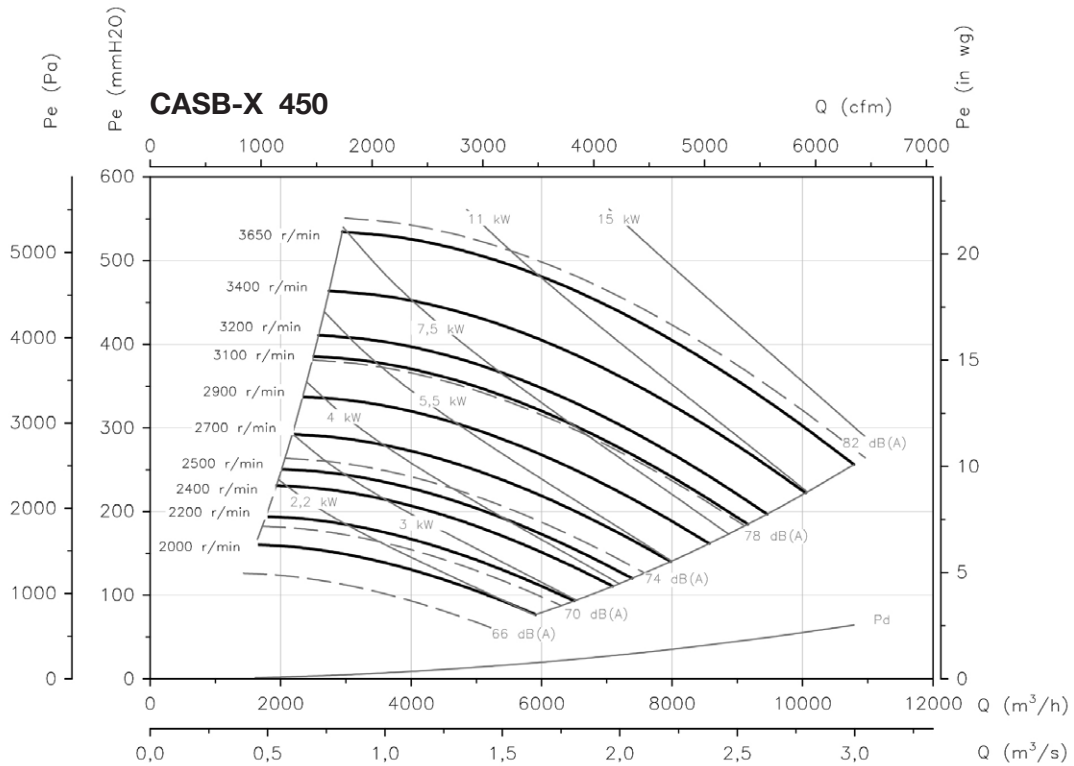
 Q= Flow rate in m³/h, m³/s and cfm

 Pe= Static pressure in mm H₂O, Pa and inwg


Characteristic curves

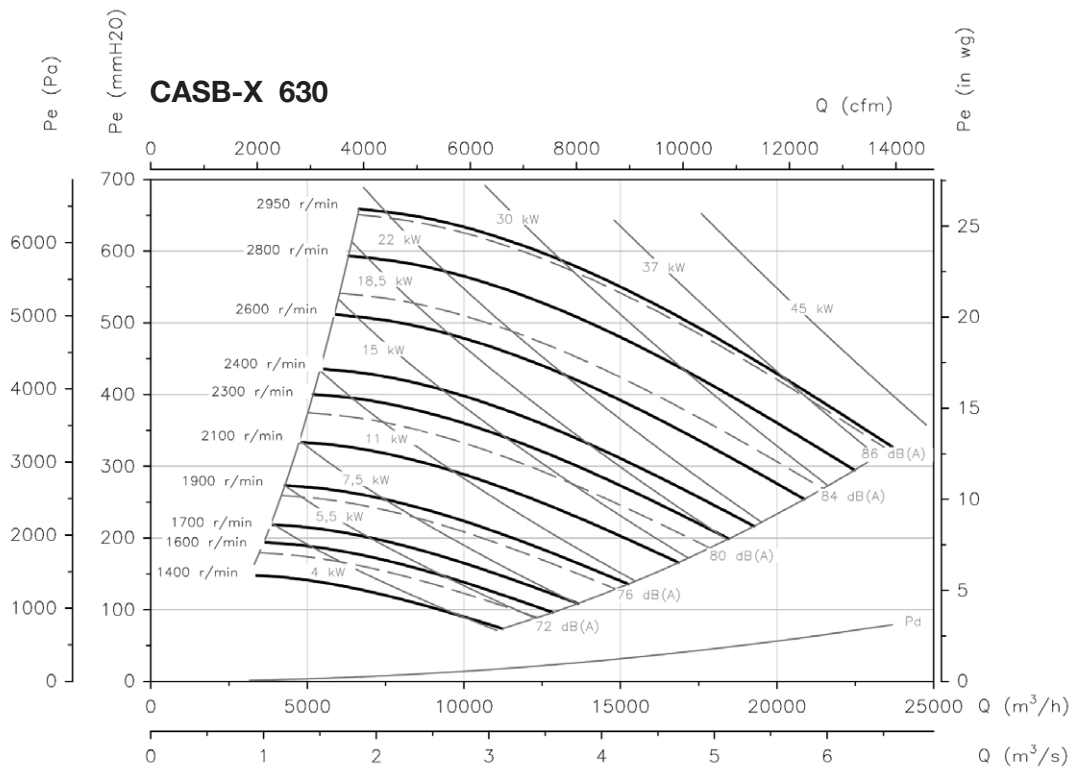
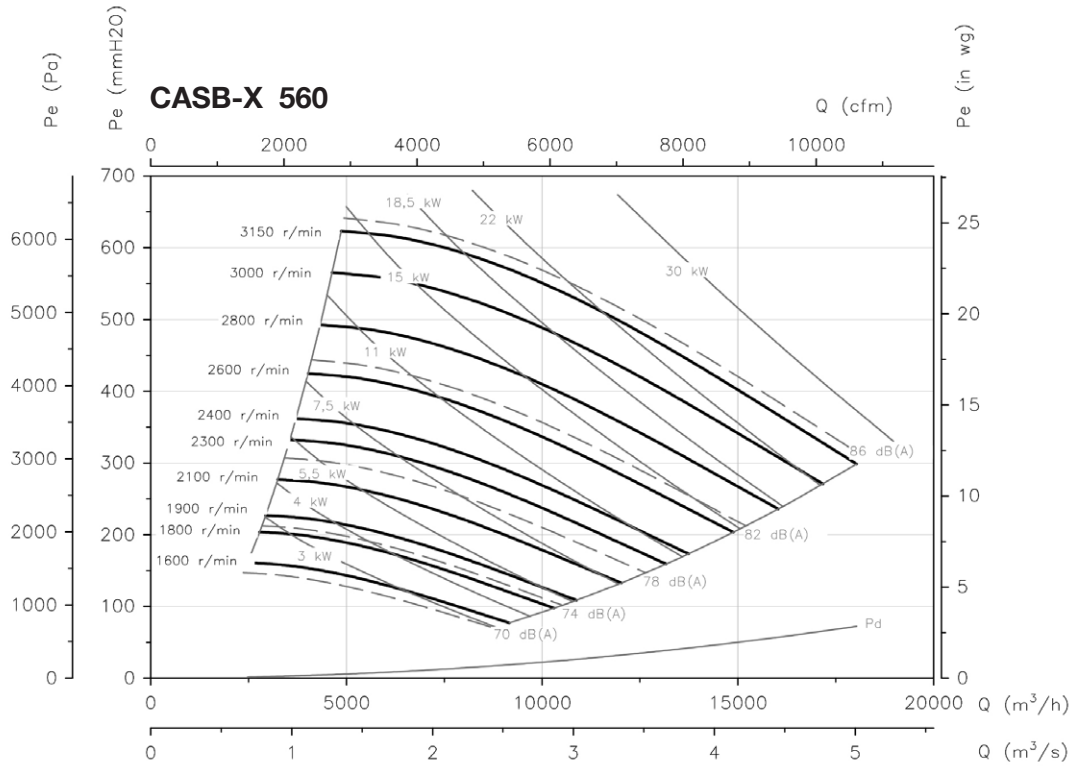
Q= Flow rate in m³/h, m³/s and cfm

Pe= Static pressure in mm H₂O, Pa and inwg



Characteristic curves

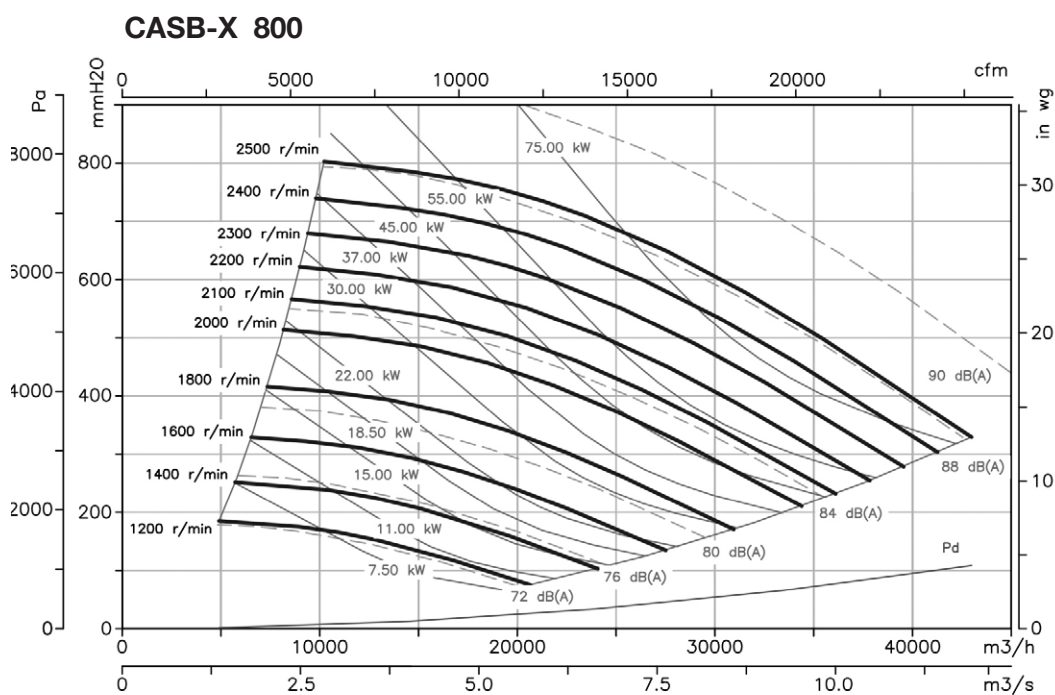
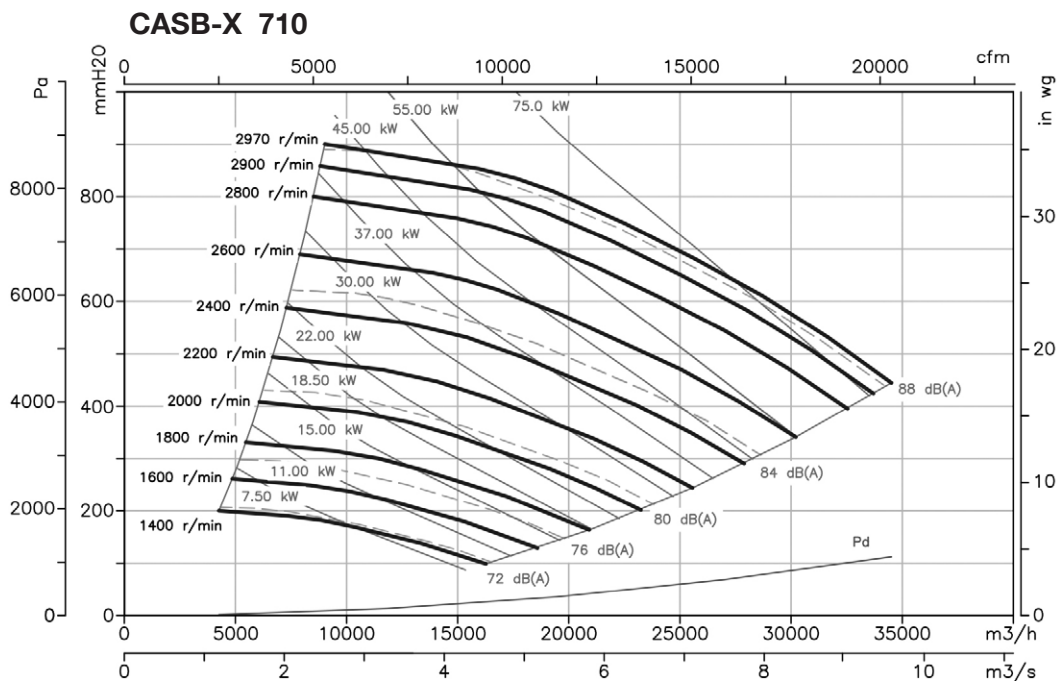
 Q= Flow rate in m³/h, m³/s and cfm

 Pe= Static pressure in mm H₂O, Pa and inwg


Characteristic curves

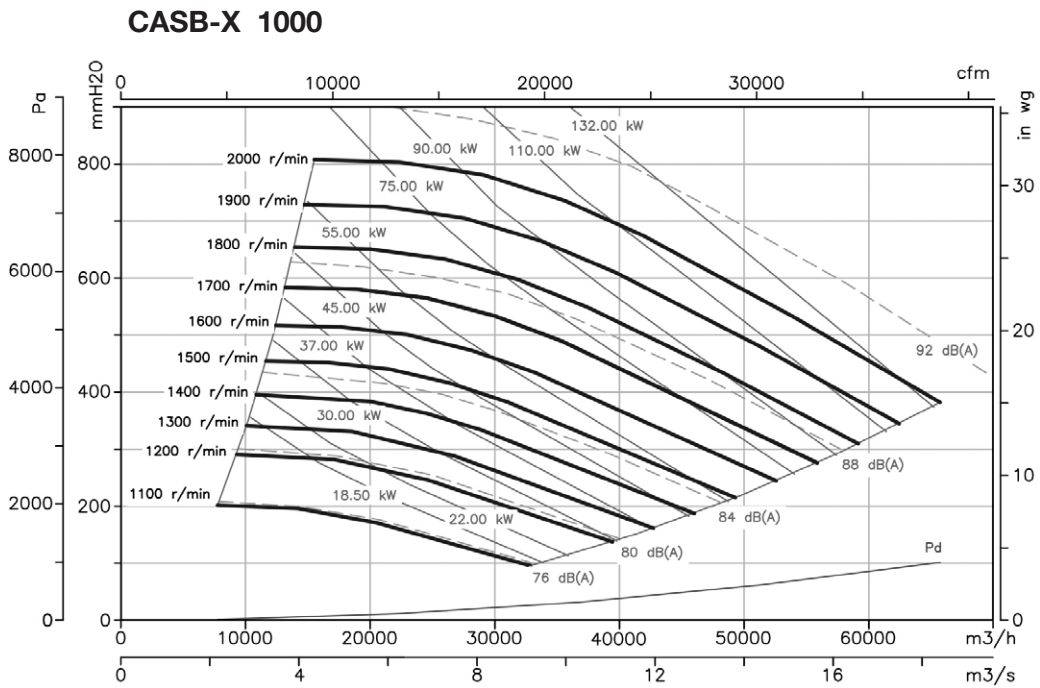
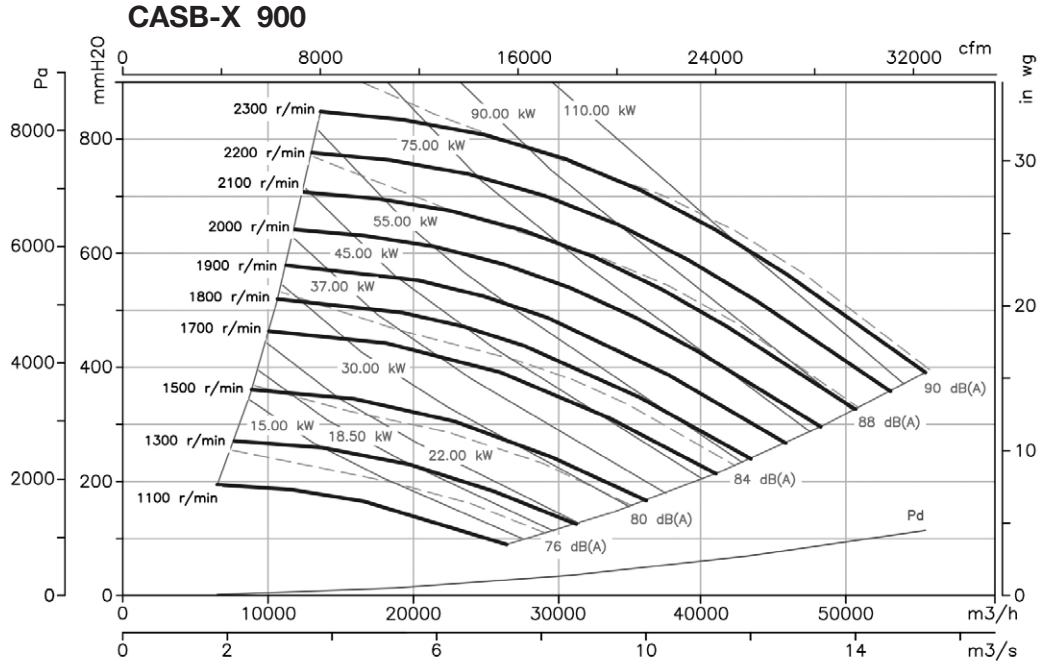
Q= Flow rate in m³/h, m³/s and cfm

Pe= Static pressure in mm H₂O, Pa and inwg



Characteristic curves

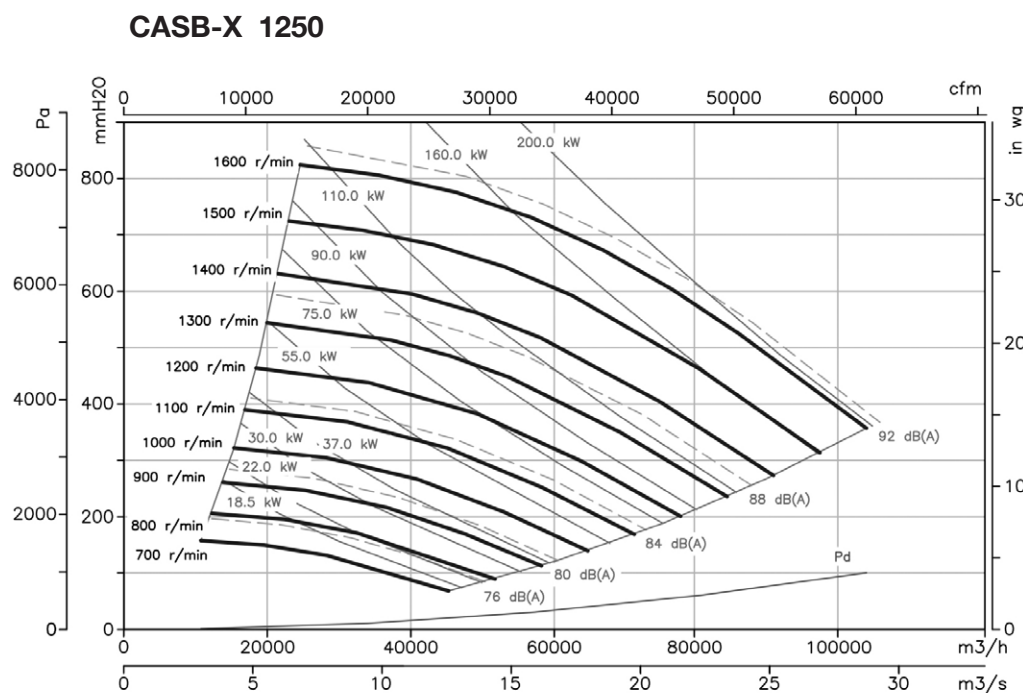
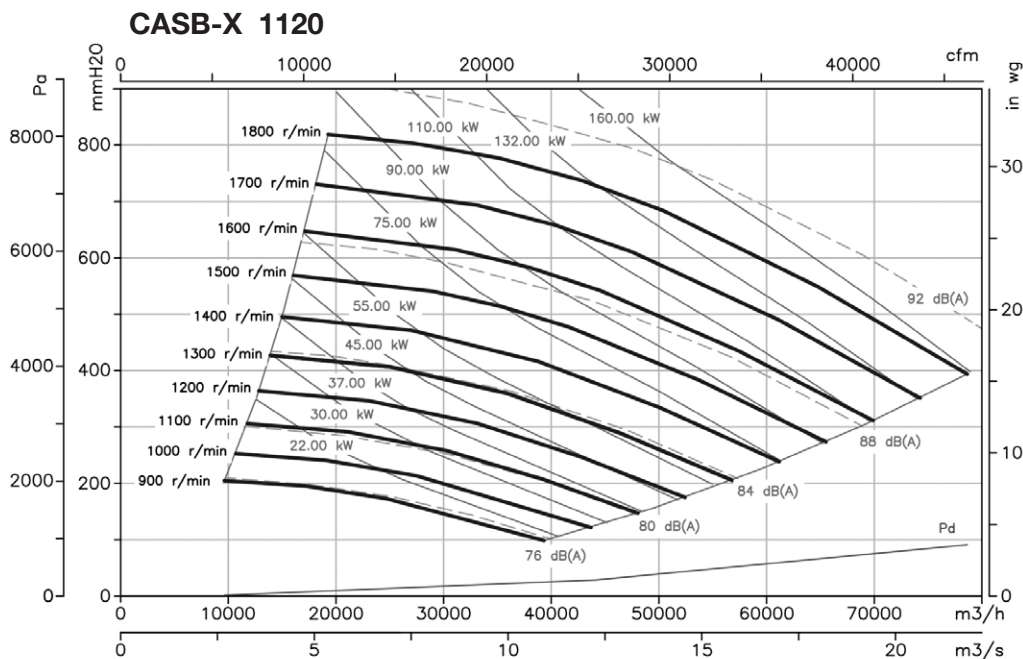
 Q= Flow rate in m³/h, m³/s and cfm

 Pe= Static pressure in mm H₂O, Pa and inwg


Characteristic curves

Q= Flow rate in m³/h, m³/s and cfm

Pe= Static pressure in mm H₂O, Pa and inwg



Characteristic curves

 Q= Flow rate in m³/h, m³/s and cfm

 Pe= Static pressure in mm H₂O, Pa and inwg
